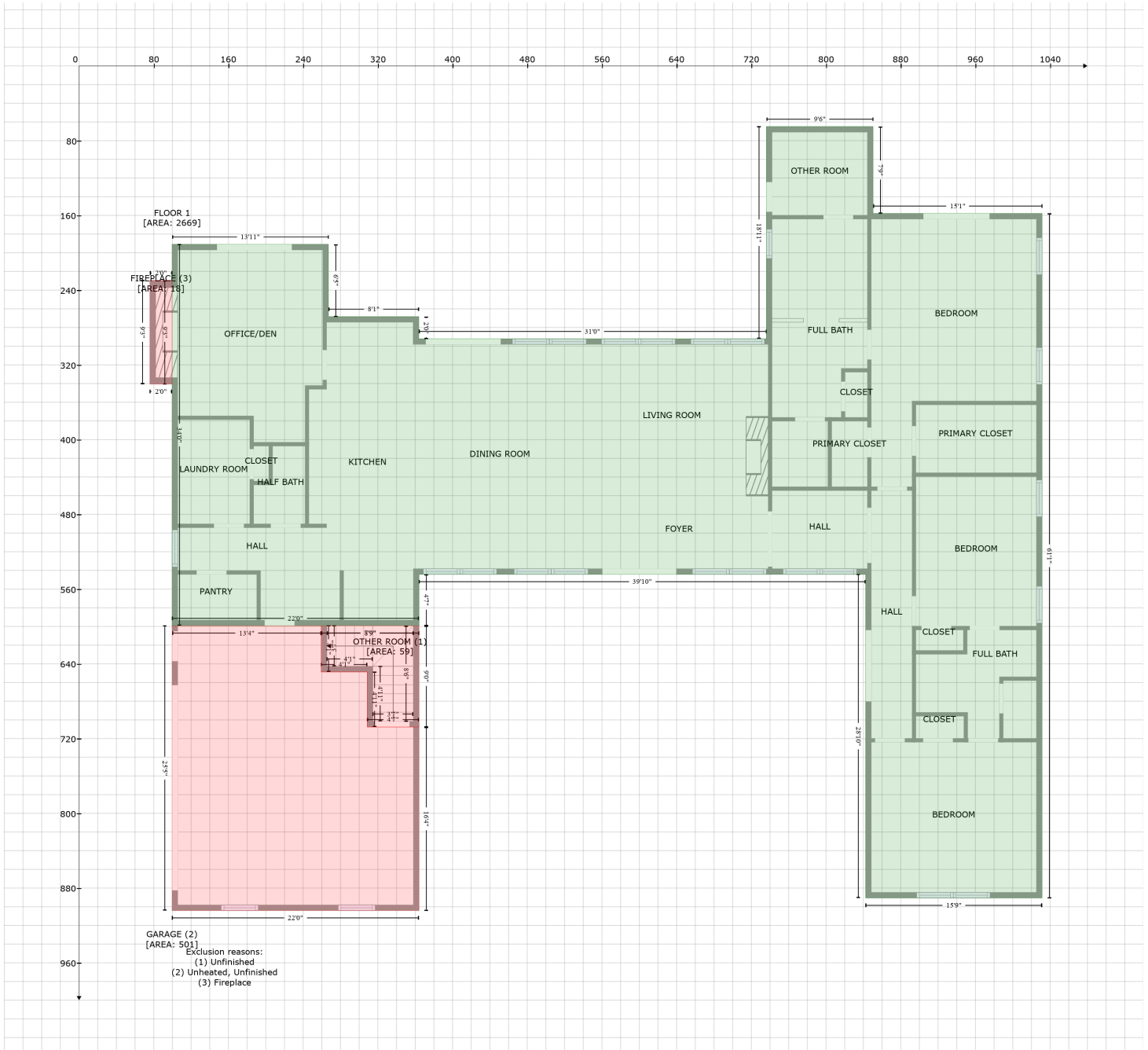


1301 Rocky Cove Lane, Denton, Davidson County, North Carolina, United States, 27239

Gross Living Area: 2669 sq. ft



Space	Area (sq. ft)	Calculation <small>Coordinate Polygon Area Algorithm using inches</small>
FLOOR 1 (Living area)	2669	$ \begin{aligned} & -((850.4 + 850.4) * (64.9 - 157.9) + (850.4 + 1031.4) * (157.9 - 157.9) + (1031.4 + 1031.4) * \\ & (157.9 - 890.6) + (1031.4 + 842.5) * (890.6 - 890.6) + (842.5 + 842.5) * (890.6 - 544.2) + (842.5 + \\ & 364.1) * (544.2 - 544.2) + (364.1 + 364.1) * (544.2 - 599.2) + (364.1 + 99.7) * (599.2 - 599.2) + \\ & (99.7 + 99.7) * (599.2 - 191) + (99.7 + 267.1) * (191 - 191) + (267.1 + 267.1) * (191 - 268.3) + \\ & (267.1 + 363.8) * (268.3 - 268.3) + (363.8 + 363.8) * (268.3 - 292.1) + (363.8 + 736.1) * (292.1 - \\ & 292.1) + (736.1 + 736.1) * (292.1 - 64.9) + (736.1 + 850.4) * (64.9 - 64.9)) * 0.5 * 0.00694 \end{aligned} $

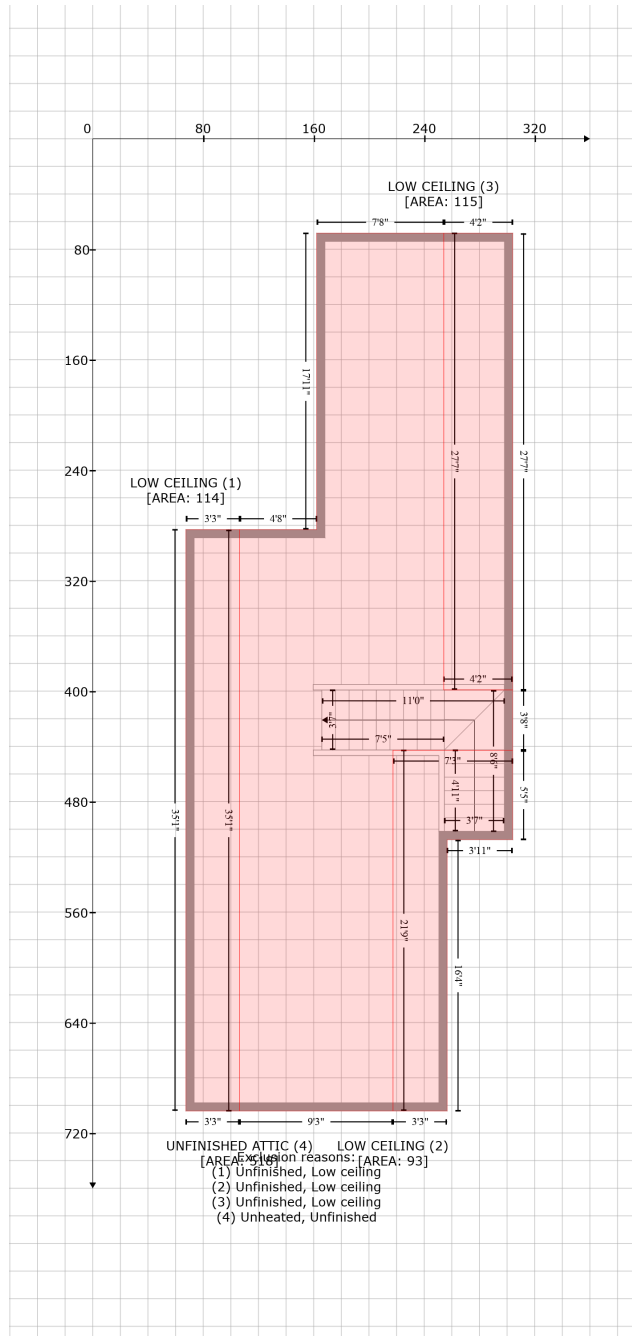
1301 Rocky Cove Lane, Denton, Davidson County, North Carolina, United States, 27239

Gross Living Area: 2669 sq. ft

Space	Area (sq. ft)	Calculation <small>Coordinate Polygon Area Algorithm using inches</small>
OTHER ROOM (Non-living area)	59	$-\left((364.1 + 364.1) * (599.2 - 707.6) + (364.1 + 308.6) * (707.6 - 707.6) + (308.6 + 308.6) * (707.6 - 648.7) + (308.6 + 259.3) * (648.7 - 648.7) + (259.3 + 259.3) * (648.7 - 599.2) + (259.3 + 364.1) * (599.2 - 599.2)\right) * 0.5 * 0.00694$
GARAGE (Non-living area)	501	$-\left((259.3 + 259.3) * (599.2 - 648.7) + (259.3 + 308.6) * (648.7 - 648.7) + (308.6 + 308.6) * (648.7 - 707.6) + (308.6 + 364.1) * (707.6 - 707.6) + (364.1 + 364.1) * (707.6 - 904.1) + (364.1 + 99.7) * (904.1 - 904.1) + (99.7 + 99.7) * (904.1 - 599.2) + (99.7 + 259.3) * (599.2 - 599.2)\right) * 0.5 * 0.00694$
FIREPLACE (Non-living area)	18	$-\left((99.7 + 99.7) * (229.6 - 340.6) + (99.7 + 75.9) * (340.6 - 340.6) + (75.9 + 75.9) * (340.6 - 229.6) + (75.9 + 99.7) * (229.6 - 229.6)\right) * 0.5 * 0.00694$

1301 Rocky Cove Lane, Denton, Davidson County, North Carolina, United States, 27239

Gross Living Area: 2669 sq. ft



Space	Area (sq. ft)	Calculation
LOW CEILING (Non-living area)	114	Coordinate Polygon Area Algorithm using inches $-((106.4 + 106.4) * (283 - 704.1) + (106.4 + 67.5) * (704.1 - 704.1) + (67.5 + 67.5) * (704.1 - 283) + (67.5 + 106.4) * (283 - 283)) * 0.5 * 0.00694$
LOW CEILING (Non-living area)	93	Coordinate Polygon Area Algorithm using inches $-((304.1 + 304.1) * (442.8 - 507.6) + (304.1 + 256.6) * (507.6 - 507.6) + (256.6 + 256.6) * (507.6 - 704.1) + (256.6 + 217.4) * (704.1 - 704.1) + (217.4 + 217.4) * (704.1 - 442.8) + (217.4 + 304.1) * (442.8 - 442.8)) * 0.5 * 0.00694$
LOW CEILING	115	Coordinate Polygon Area Algorithm using inches $-((304.1 + 304.1) * (68.3 - 399.1) + (304.1 + 254.2) * (399.1 - 399.1) + (254.2 + 254.2) * (399.1 -$

1301 Rocky Cove Lane, Denton, Davidson County, North Carolina, United States, 27239

Gross Living Area: 2669 sq. ft

Space	Area (sq. ft)	Calculation <small>Coordinate Polygon Area Algorithm using inches</small>
(Non-living area)		$68.3 + (254.2 + 304.1) * (68.3 - 68.3) * 0.5 * 0.00694$
UNFINISHED ATTIC (Non-living area)	518	$-((254.2 + 254.2) * (68.3 - 399.1) + (254.2 + 304.1) * (399.1 - 399.1) + (304.1 + 304.1) * (399.1 - 442.8) + (304.1 + 217.4) * (442.8 - 442.8) + (217.4 + 217.4) * (442.8 - 704.1) + (217.4 + 106.4) * (704.1 - 704.1) + (106.4 + 106.4) * (704.1 - 283) + (106.4 + 162.2) * (283 - 283) + (162.2 + 162.2) * (283 - 68.3) + (162.2 + 254.2) * (68.3 - 68.3)) * 0.5 * 0.00694$